

# Falando de Amor

Tom Jobim

(Choro)

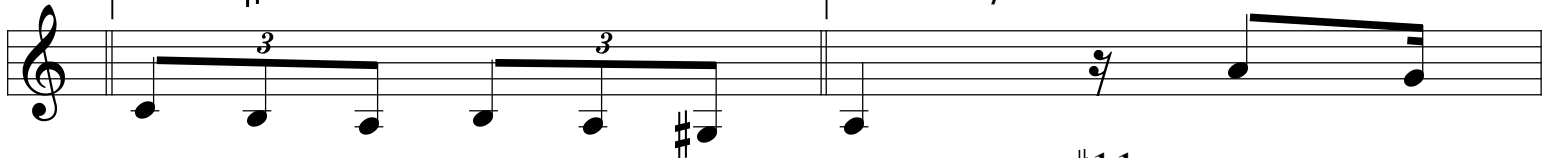
E<sup>7</sup>/G<sup>#</sup><sub>3</sub> Am<sup>7</sup> E<sup>7</sup>/G<sup>#</sup> G<sup>m</sup>6 F<sup>#</sup><sup>#</sup>11<sub>7</sub>



F<sup>Maj</sup>7 E<sup>7</sup>b9 Am<sup>7</sup> Am<sup>7</sup>/G 1. F<sup>#</sup>m<sup>7</sup>b5 F<sup>#</sup>11<sub>7</sub> F<sup>6</sup>b5 E<sup>7</sup>



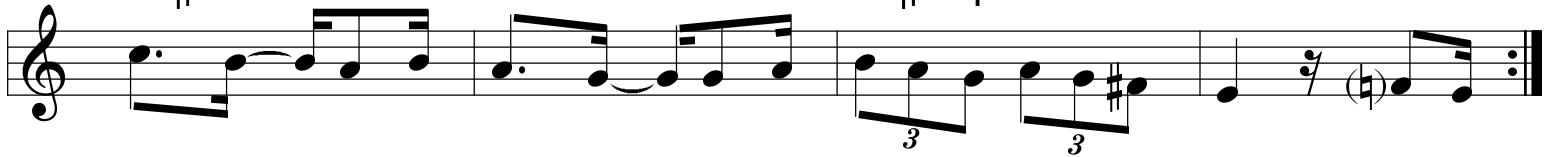
2. F<sup>#</sup>o7 E<sup>7</sup> ⊕ E<sup>b</sup><sup>#</sup>11<sub>7</sub>



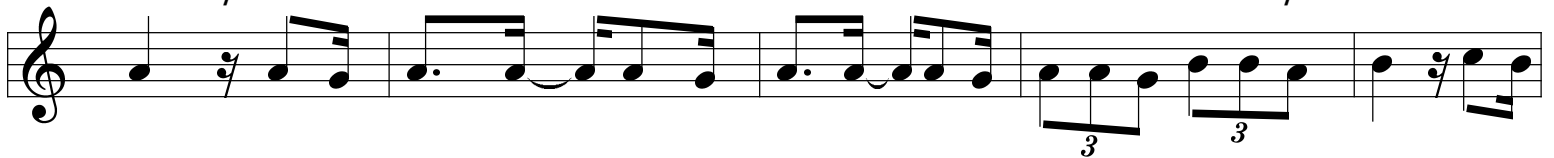
D<sup>m</sup>7 G<sup>7</sup>#5 C<sup>Maj</sup>7 D<sup>m</sup>7 D<sup>b</sup><sup>#</sup>11<sub>7</sub> C<sup>Maj</sup>7



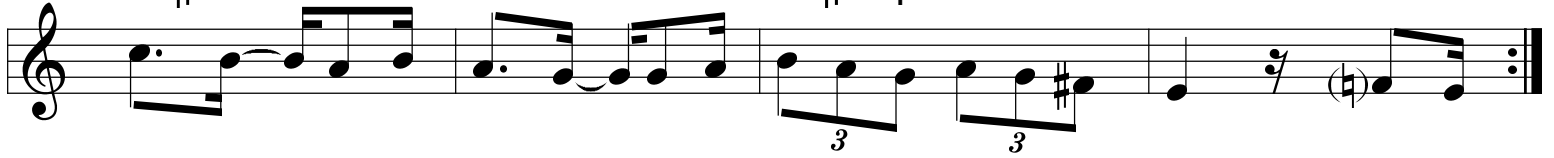
F<sup>#</sup>m<sup>7</sup>b5 B<sup>7</sup>b9 E<sup>m</sup>7 F<sup>#</sup>m<sup>7</sup><sub>4</sub> B<sup>7</sup>b9 E<sup>7</sup> D.C. à Coda



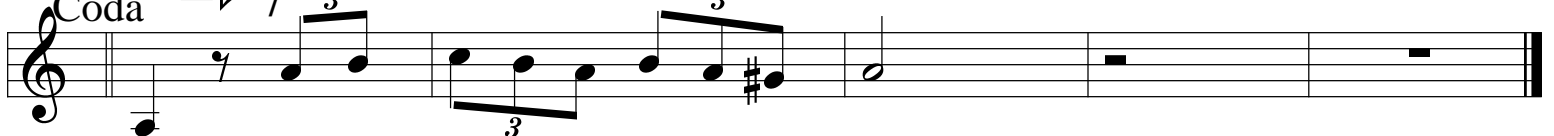
E<sup>b</sup><sup>#</sup>11<sub>7</sub> D<sup>m</sup>7 G<sup>7</sup>#5 C<sup>Maj</sup>7 D<sup>m</sup>7 D<sup>b</sup><sup>#</sup>11<sub>7</sub> C<sup>Maj</sup>7



F<sup>#</sup>m<sup>7</sup>b5 B<sup>7</sup>b9 E<sup>m</sup>7 F<sup>#</sup>m<sup>7</sup><sub>4</sub> B<sup>7</sup>b9 E<sup>7</sup> D.C. à Coda



⊕ Coda E<sup>b</sup><sup>#</sup>11<sub>7</sub> B<sup>13</sup> E<sup>7</sup> F<sup>Maj</sup>7 D<sup>m</sup>7 Am(Δ9)



Musical notation on a staff with a treble clef, a key signature of one sharp (F#), and a 7/8 time signature. The notation includes a quarter note, a dotted quarter note, an eighth note, a triplet of eighth notes, a quarter note, a half note, and a whole note. A finger number '1' is written below the staff.